

HYDRECO

HYDRAULIC SOLUTIONS PROVIDER

ENGINEERED TO MOVE



OUTSTANDING PERFORMANCE ON A GLOBAL SCALE

We can demonstrate a proven ability to meet the needs of our customers and to support world leaders in their individual fields. It's not just about delivering a product; it starts with assessing each customer's needs, runs through correctly selecting or configuring the product, and continues for its extended life cycle.

Superior performance, outstanding quality, excellent service and expert advice. Those are the cornerstones of the global hydraulics capability represented by David Brown Hydraulics, Hydreco and Powauto.

Our hydraulic gear pumps and motors, main control valves, pilot control valves and power take-offs provide the power and control behind the biggest names for equipment in construction, forestry, agriculture and mining through to specialised plant for materials handling, marine and municipal use, along with a wide range of industrial applications.

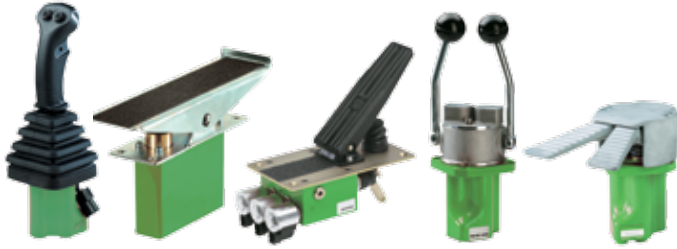
Practical performance, allied to knowledge of the user's application, and backed by superb technical skills and capabilities, ensures we have the strength to satisfy hydraulic demand on a global level.



PILOT CONTROL VALVES

Remote pilot operation of directional control valves with user-friendly, low effort controls.

- Single, multiple and joystick controllers
- Stylish, ergonomic designs for modern cabs
- Range of accurate, low hysteresis control curves
- Dedicated pilot valves, with magnetic detents, to control 2 or 3 spool directional valve for wheeled loader applications
- Range of valves with foot pedal operation



HANDLES

Ergonomic multi function handles for both safe and accurate man/machine interface.

- Knobs and levers with or without electrical switches and range of buttons
- Stylish, ergonomic designs for modern cabs
- Multifunction handles with extended button area
- Dedicated safety switch functions; with button or capacitive sensors safeTgrip™



ELECTRICAL JOYSTICKS

For use in electronic control systems. Pedals and joysticks

- Analogue
- On Off
- PWM
- CAN-bus
- With or without programmable functions



ELECTRAULICS

CAN-bus control systems

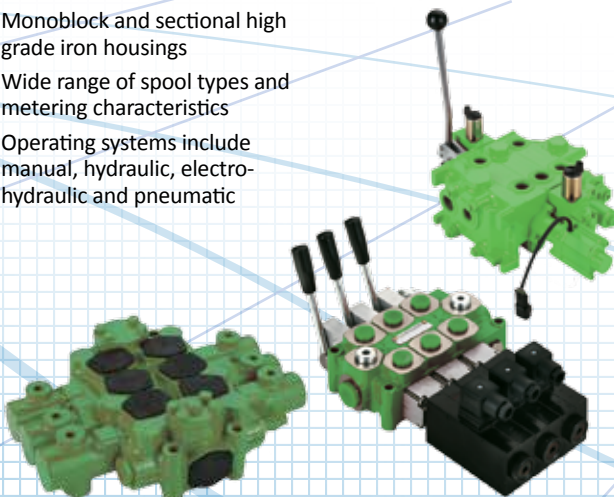
- Digital and Analogue inputs and outputs
- Inbuilt safety functions
- Master / Slave system ability
- Easy to use programming software
- GPS and other remote communication enabled



DIRECTIONAL CONTROL VALVES

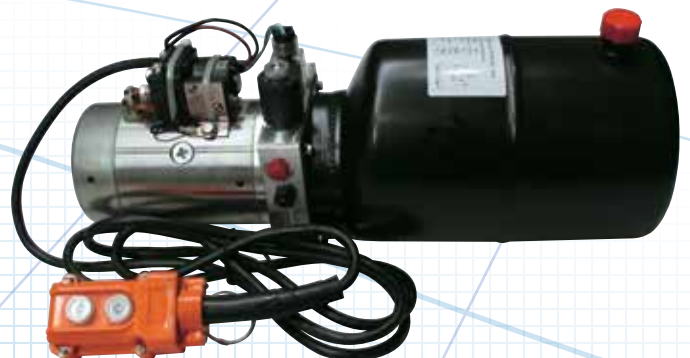
Directional Control Valves for mobile, materials handling and other applications.

- 30 to 450 l/min (7.9 to 119 gal/min) and up to 250 bar (3500 psi) system pressure
- Parallel, tandem and mixed circuits available depending on model
- Monoblock and sectional high grade iron housings
- Wide range of spool types and metering characteristics
- Operating systems include manual, hydraulic, electro-hydraulic and pneumatic
- Integral system relief valve together with individual port relief and make up options available



COMPACT POWER-PACKS

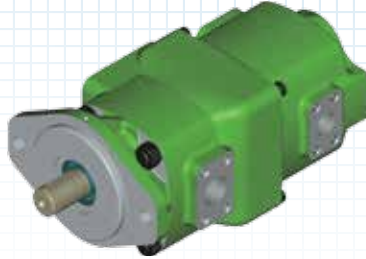
Built up by high pressure gear pumps, DC motors for either 12 or 24 VDC, multi-functional manifold, valves, tank, remote control, etc. these power units features both typical power up power down (dual action) and a power up gravity down circuits (single action). Relief valves provides an extra protection for the equipment. The lowering speed is automatically adjusted by a pressure compensated flow control valve. These series are widely used in tipper trailers, hydraulic hoists and so on.



WORLD PUMPS

Single and multiple pump options covering all applications from 12 to 240 cc/rev (0.73 to 14.6 cu in/rev) per pump section. Low noise spur gear technology minimizes pressure ripple and noise.

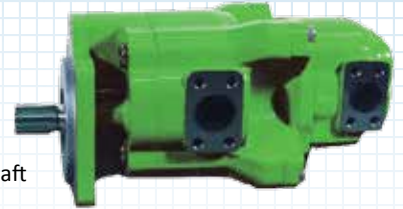
- 350 bar (5076 psi) nominal pressure
- 450 To 3500 RPM
- High volumetric efficiency
- Very low noise levels
- Cast iron construction
- Long life plain bearings
- Multiple pumps on one shaft
- Popular drives and ports



Q SERIES PUMPS

Single and multiple pump options covering all applications from 16 to 240 cc/rev (0.98 to 14.65 cu in/rev) per pump section. Patented helical or low noise spur gear technology minimizes pressure ripple and noise.

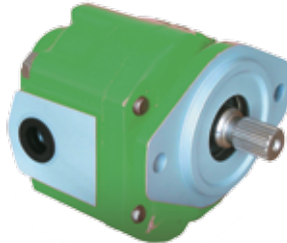
- 280 bar (4000 psi) peak pressure
- 450 to 3000 RPM
- High volumetric efficiency
- Very low noise levels
- Cast iron construction
- Long life plain bearings
- Multiple pumps on one shaft
- Popular drives and ports



X5 SERIES GEAR PUMPS

Single and multiple pump options for higher volume applications from 23 to 68 cc/rev (1.40 to 4.15 cu in/rev) per pump section. Single through to quadruple pump assemblies. Helical gear technology minimises noise.

- 280 bar (4000 psi) peak pressure
- 450 to 3000 RPM
- High volumetric efficiency
- Very low noise levels
- Cast iron construction
- Long life plain bearings
- Multiple pumps on one shaft
- Popular drives and ports



ALUMINIUM HELICAL AND SPUR GEAR PUMPS

Single and multiple pump options from 1.2 to 116 cc/rev (0.07 to 7.08 cu in/rev) per pump section. Spur versions across whole range with helical from 6 to 40cc/rev (0.37 to 2.44 cu in/rev). Hydraulic motors also available.

- 250 bar (3500 psi) peak pressure
- Up to 4000 RPM
- High efficiency
- Integral relief valves
- Multiple pumps on one shaft
- Popular drives and ports



ORBITAL MOTORS

- Economical Design
- Shaft distribution flow
- High torque and pressure
- Low weight
- Compensation function
- Reliable and smooth operation
- Long life
- Individual multifunction
- Disc distribution flow
- From 36cc/rev990cc/rev



DUMP PUMPS

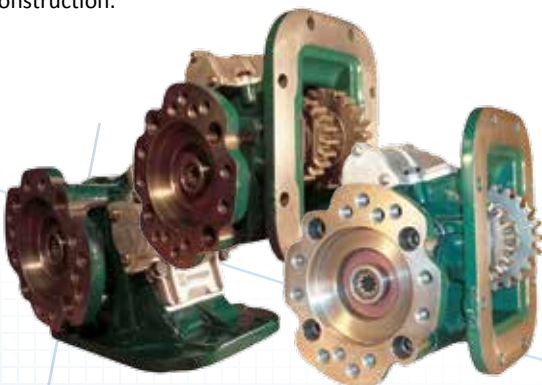
Hydrec Powauto dump pumps utilise premium components for long life and durability.

- Remote and direct mount air and cable shift options available
- Flow: 20 gal/min and 25 gal/min



PTOS AND TRUCK HYDRAULICS SOLUTIONS

With a reputation for rugged design and long life, the range consists of PTOs, Controls, Valves and Pumps. Serving the transport hydraulic market in applications such as tipping/dump, waste management, municipal, cranes, recovery vehicles, mining, drilling and construction.

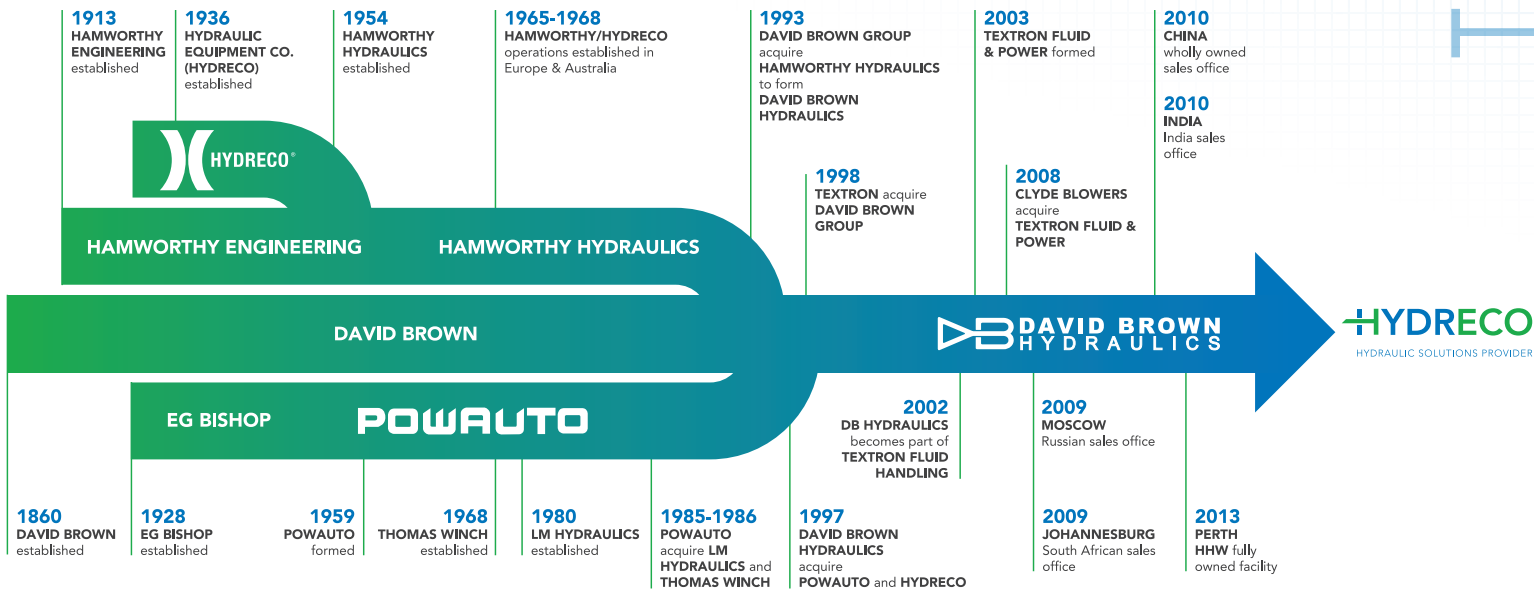


TELESCOPIC CYLINDERS

Robust front end and under body telescopic cylinders for tipper/dump truck and trailer applications.

- 3, 4 and 5 stage units
- Outer cover versions available
- Spherical bearing joints available
- Load capacity 15-40 tonnes





100 YEARS OF HYDRAULICS EXPERIENCE

Hydreco Hydraulics is the designer, manufacturer and distributor of products servicing the transport and mobile hydraulics sector. Hydreco has a combined history of 100 years in developing solutions through a rich heritage of legacy companies. The joining of David Brown Hydraulics, Powauto and Hydreco in 1997 brought together some of the most respected products, people and heritage brands in the business.

Engineering excellence is at the core of our organization, the product range is geared towards offering the best possible solution for many applications within Construction, Earth moving, Transport, Industrial, Materials handling, and many more. We pride ourselves on supporting customers through leading edge products, designed to provide optimum performance and extensive reliability in continual hard working applications. With innovative technology our products have evolved and developed, leading to a range of some of the highest quality products available in the market place. The

business is positioned to respond to your hydraulic needs through a worldwide network of manufacturing and sales facilities.

Hydreco has an extensive range of low noise helical gear, aluminium and cast iron gear pumps and standard spur gear models from its David Brown heritage. Its valve range covers multi-spool sectional and monoblock models with electro hydraulic, hydraulic and lever control. Dual axis, stackable and single axis hydraulic pilot valves, with an extensive range of handle options including ergonomic handles with many switches and button options. The valves are available with spring centred and electric detent options.

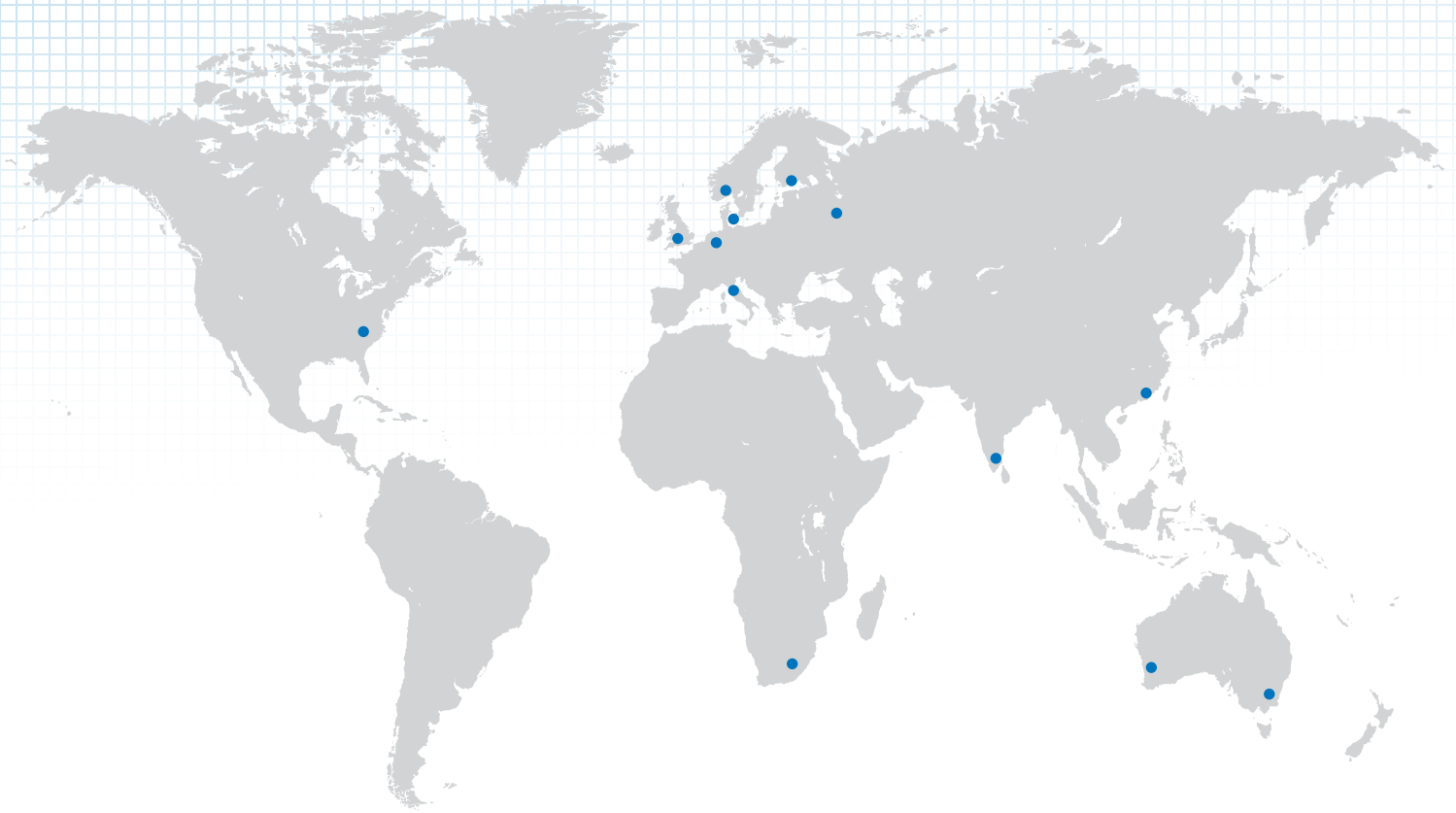
Under the name Hydreco Powauto, with heritage back to 1928, we sell our range of Transport hydraulics products. The product range covers power take-off units, pumps, valves, cylinders and accessories for on and off road vehicles. This World Class brand possesses a strong footprint in Asia Pacific building on its excellent reputation.



The manufacturing engineering office from the 1950's



The Tool Room from 1947



CONTACT INFORMATION

EMEA				
DENMARK	Hydreco Hydraulics Denmark A/S, Kastrup (Copenhagen)	Tel: +45 32 51 40 15	Fax: +45 32 51 20 22	info-dk@hydreco.com
FINLAND	Hydreco Hydraulics Finland Oy, Helsinki	Tel: +358 9 342 4120	Fax: +358 9 342 41236	sales-fi@hydreco.com
GERMANY	Hydreco Hydraulics GmbH, Straelen (NRW)	Tel: +49 2834 94303-41	Fax: +49 2834 94303-64	info-de@hydreco.com
ITALY	Hydreco Hydraulics Italia Srl, Vignola (MO)	Tel: +39 059-7700411	Fax: +39 059-7700425	sales-it@hydreco.com
NORWAY	Hydreco Hydraulics Norway AS, Skjetten	Tel: +47 22 90 94 10	Fax: -	post-no@hydreco.com
RUSSIA	Hydreco Hydraulics Russia, Moscow	Tel: +7 495 967 3453	Fax: +7 495 785 0636	sales-ru@hydreco.com
SOUTH AFRICA	Hydreco Hydraulics (Proprietary) Ltd, Benoni	Tel: +27(0)11 748 0076	Fax: +27 (0) 86 558 2942	sales-sa@hydreco.com
UK	Hydreco Hydraulics Ltd, Poole, Dorset	Tel: +44 (0) 1202 627500	Fax: +44 (0) 1202 627555	info-uk@hydreco.com
AMERICAS				
USA	Hydreco Inc, Charlotte (NC)	Tel: +1 704 295-7575	Fax: +1 704 295-7574	sales-us@hydreco.com
LATIN AMERICA		Tel: +1 704 572-6266		sales-es@hydreco.com
APAC				
AUSTRALIA	Hydreco Hydraulics Pty Ltd, Seven Hills (NSW)	Tel: +61 2 9838 6800	Fax: +61 2 9838 6899	sales-au@hydreco.com
AUSTRALIA	Hydreco Hydraulics Pty Ltd, Narellan (NSW)	Tel: +61 246 476 577	Fax: +61 2 4648 2257	hydreco-au-narellan@hydreco.com
AUSTRALIA	Hydreco Hoist & Winch Sales (WA) Pty Ltd, Bassendean (WA)	Tel: +61 8 9377 2211	Fax: +61 8 9377 2223	hydreco-au-hhw@hydreco.com
CHINA	Hydreco Hydraulics (Xiamen) Co. Ltd, Xiamen, (Fujian)	Tel: +86 0592 2237 901	Fax: +86 0592 2237 052	sales-cn@hydreco.com
INDIA	Hydreco Hydraulics India Private Ltd, Bangalore	Tel: +91 80 42713100	Fax: +91 80 42713111	sales-in@hydreco.com