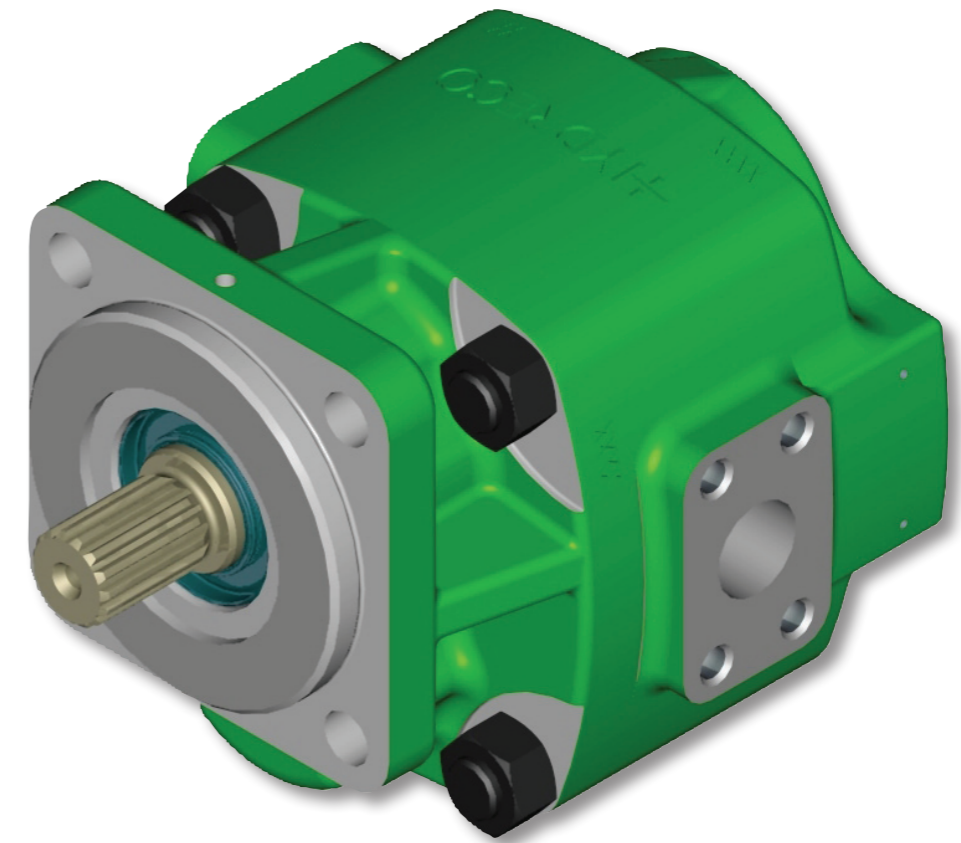




WORLD SERIES HYDRAULIC GEAR PUMP



CONTACT INFORMATION

EMEA				
DENMARK	Hydreco Hydraulics Denmark A/S, Kastrup (Copenhagen)	Tel: +45 32 51 40 15	Fax: +45 32 51 20 22	info-dk@hydreco.com
FINLAND	Hydreco Hydraulics Finland Oy, Helsinki	Tel: +358 9 342 4120	Fax: +358 9 342 41236	sales-fi@hydreco.com
GERMANY	Hydreco Hydraulics GmbH, Straelen (NRW)	Tel: +49 2834 94303-41	Fax: +49 2834 94303-64	info-de@hydreco.com
ITALY	Hydreco Hydraulics Italia Srl, Vignola (MO)	Tel: +39 059-7700411	Fax: +39 059-7700425	sales-it@hydreco.com
NORWAY	Hydreco Hydraulics Norway AS, Skjetten	Tel: +47 22 90 94 10	Fax: -	post-no@hydreco.com
RUSSIA	Hydreco Hydraulics Russia, Moscow	Tel: +7 495 967 3453	Fax: +7 495 785 0636	sales-ru@hydreco.com
SOUTH AFRICA	Hydreco Hydraulics (Proprietary) Ltd, Benoni	Tel: +27(0)11 748 0076	Fax: +27 (0) 86 558 2942	sales-sa@hydreco.com
UK	Hydreco Hydraulics Ltd, Poole, Dorset	Tel: +44 (0) 1202 627500	Fax: +44 (0) 1202 627555	info-uk@hydreco.com
AMERICAS				
USA	Hydreco Inc, Charlotte (NC)	Tel: +1 704 295-7575	Fax: +1 704 295-7574	sales-us@hydreco.com
LATIN AMERICA		Tel: +1 704 572-6266		sales-es@hydreco.com
APAC				
AUSTRALIA	Hydreco Hydraulics Pty Ltd, Seven Hills (NSW)	Tel: +61 2 9838 6800	Fax: +61 2 9838 6899	sales-au@hydreco.com
AUSTRALIA	Hydreco Hydraulics Pty Ltd, Narellan (NSW)	Tel: +61 246 476 577	Fax: -	sales-au@hydreco.com
AUSTRALIA	Hydreco Hoist & Winch Sales (WA) Pty Ltd, Bassendean (WA)	Tel: +61 8 9377 2211	Fax: +61 8 9377 2223	sales-au@hydreco.com
CHINA	Hydreco Hydraulics (Xiamen) Co. Ltd, Xiamen, (Fujian)	Tel: +86 0592 2237 901	Fax: +86 0592 2237 052	sales-cn@hydreco.com
INDIA	Hydreco Hydraulics India Private Ltd, Bangalore	Tel: +91 80 42713100	Fax: +91 80 42713111	sales-in@hydreco.com

www.hydreco.com

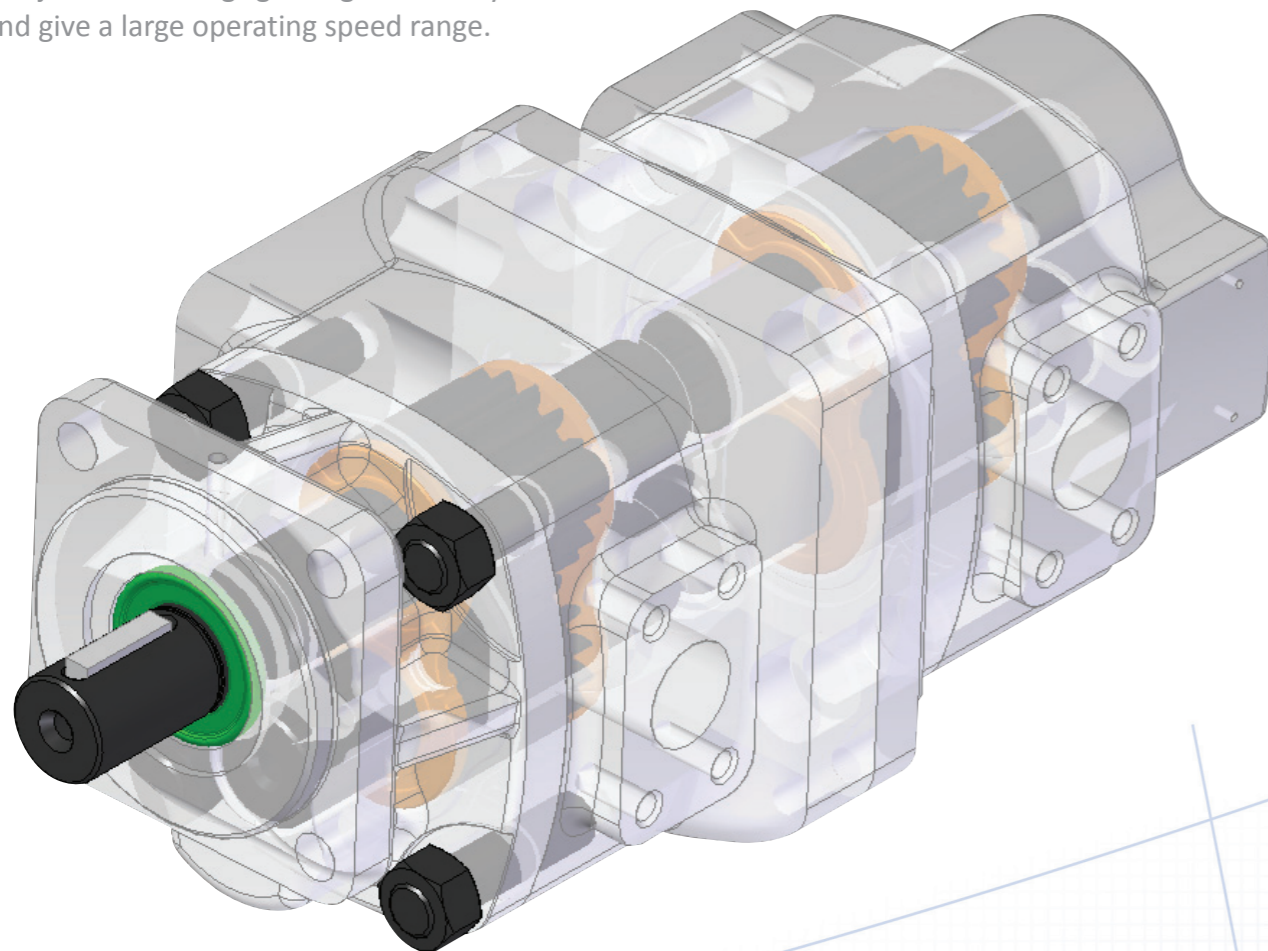
Hydraulic Gear Pumps Reinvented

The new range of high performance hydraulic gear pumps from Hydreco Hydraulics. Designed to meet demanding specifications from customers in the Construction, Mining, Transport and Industrial industries and manufactured to provide high mechanical and volumetric efficiency and high working pressures.

THE STORY...

Features

- Polished large diameter journals for higher load-bearing capacity.
- Precision machined shafts and gears made from high strength heat treated steel, the 18-teeth gears reduce pressure ripple (noise) and improves volumetric efficiency.
- One piece gear and shaft construction gives increased resistance to fatigue.
- Pressure balanced aluminium wear plates with integrated seals provide optimum pump functional life.
- High grade steel gears, cast iron housing and journal bearings give high efficiency and give a large operating speed range.
- A wide range of mounting flanges, port interfaces and pump combinations give customers the ability to customise the World Series Pump to their particular need.
- Our proven two piece housing designed with the latest engineering technologies to reduce weight and size allows the customer to fit the World Series Pump into more challenging applications where space is at a premium.



Benefits

- The new World Series Pump maximises hydraulic gear pump pressure performance and allows machine designers to improve machine operation cycle time and machine competitiveness.
- Gives the customer an improved overall machine efficiency, lower power consumption and improved machine operational cycle time.
- Quick and easy to engineer to your application. Reduced machine development time.
- The new World Series Gear Pump is more tolerant to hydraulic system contamination than closed loop piston pumps and vane pumps and gives the machine a more robust and easy to maintain system with increased "up-time".
- This new range of pumps is designed for robustness and the capability of giving long working hours in the harshest environments.
- The proven two piece design body and mounting flange gives a lower risk of leakage and reduced maintenance.
- Gives improved mechanical and volumetric efficiency with subsequently reduced fuel consumption. Design also supports noise reduction.