

# Low Loader Application



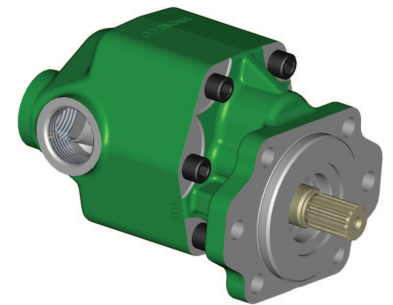
## Hydreco Powauto can provide a great range of transport hydraulic products to suit low loader applications



The brand name Hydreco Powauto is synonymous with top quality transmission power take-off (PTO) equipment to suit most vehicles used in Australia and around the world. Hydreco Powauto specialise in manufacturing PTO equipment to suit the many different gearboxes used in today's heavy transport vehicles and have an active research and development programme to ensure they keep abreast of the many changes in modern vehicle transmissions.

The basic P.T.O. range includes nearly 350 different models with thousands of variations of these basic units available to cater for customer requirements.

The Hydreco Powauto POW Series pump is for those applications requiring high pressure and those needing large flows. The POW pump has been designed for maximum efficiency to reduce heat build up due to internal leakage which becomes a problem if used for extended periods. Manufactured from rugged SG iron, this product is well suited to high pressure applications. We have 8 gear pump sizes ranging from 25cc to 115cc.



Our range of hydraulic control valves come in several variants and many options are available, from manual, to pilot hydraulic, to pneumatic control, to electro hydraulic control, with many accessories. They are designed for high accuracy, long life performance in the harshest conditions.

We also have a large range of pneumatic controls, in-line relief valves, filtration systems, oil and lubrications, couplings, hose and fittings and much more to cater for the application needs.



Version Control No. 2015 01 A

[www.hydreco.com](http://www.hydreco.com)